



GMT MONTHLY MEMBERSHIP PROGRESS REPORT

Results as of: 6/30/2019

Multiple District 21

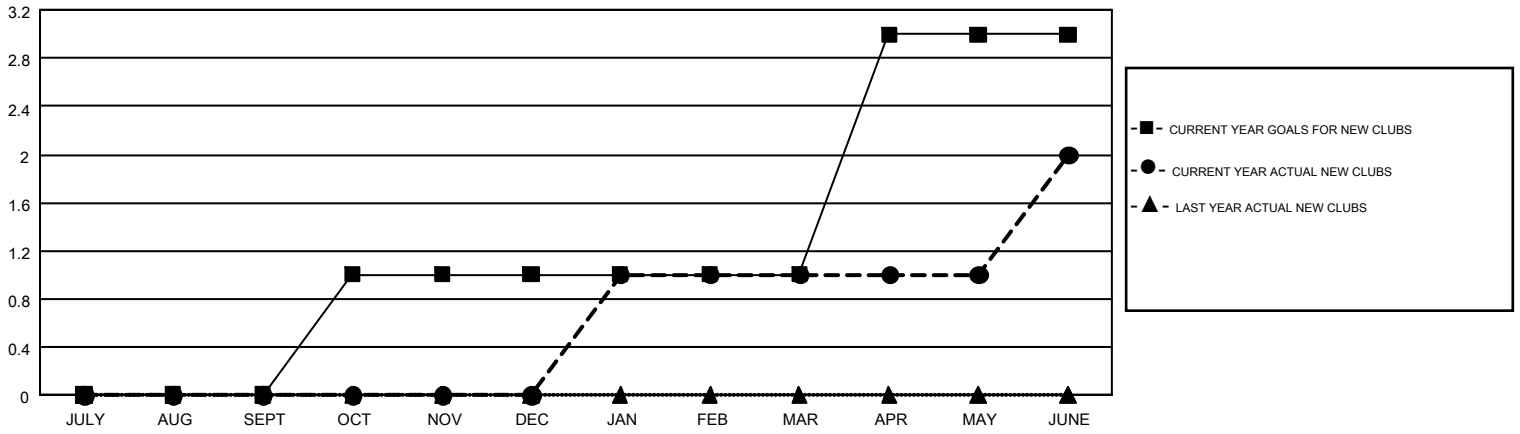
LOCATION: ARIZONA

GMT: WILLIAM PHILLIPI

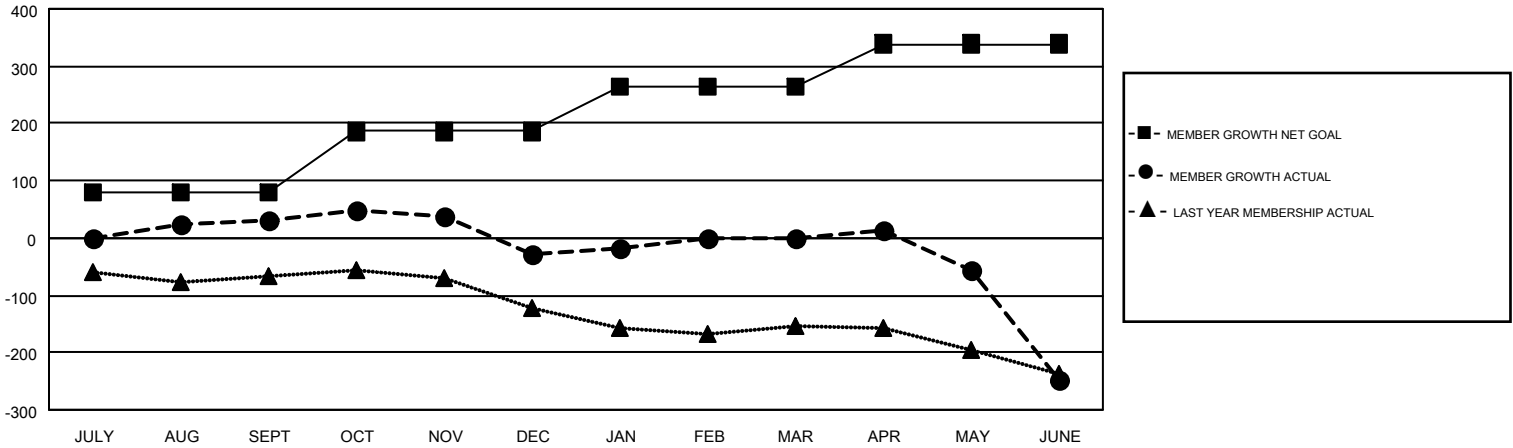
GMT CA 1

| Clubs | | | | Members | | | |
|-----------------------|---------------|-----------|---------------|-----------------------|------------------------|----------------------|--|
| RESULTS FOR 2018-2019 | | | | RESULTS FOR 2018-2019 | | | |
| QUARTER | NEW CLUB GOAL | NEW CLUBS | DROPPED CLUBS | QUARTER | MEMBER GROWTH NET GOAL | MEMBER GROWTH ACTUAL | DROPPED MEMBERS ACTUAL (including transfers) |
| JULY/AUG/SEPT | 0 | 0 | 0 | JULY/AUG/SEPT | 81 | 116 | 63 |
| OCT/NOV/DEC | 1 | 0 | 1 | OCT/NOV/DEC | 105 | 103 | 141 |
| JAN/FEB/MAR | 0 | 1 | 0 | JAN/FEB/MAR | 77 | 106 | 74 |
| APR/MAY/JUNE | 2 | 1 | 3 | APR/MAY/JUNE | 76 | 170 | 374 |

GOALS AND ACTUAL NEW CLUBS CUMULATIVE



GOALS AND ACTUAL MEMBERS CUMULATIVE



| | | | |
|------------------------|---|---------------------------------|----------------|
| DROPPED CLUBS: 4 | 75 CLUBS OF 117 ADDED 1 OR MORE NEW MEMBERS | <u>GENDER DISTRIBUTION</u> | |
| <u>DROPPED MEMBERS</u> | | MALE | 1,575 (56.19%) |
| DECEASED | 56 | FEMALE | 1,228 (43.81%) |
| CLUB CANCELLED | 6 | TOTAL FAMILY UNIT MEMBERS | |
| OTHER | 590 | 806 | |
| TOTAL | 652 | FAMILY MEMBERS PAYING HALF DUES | |
| | | 420 | |

[CLICK HERE FOR CUMULATIVE MEMBERSHIP DATA](#)